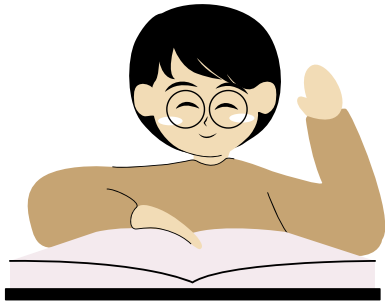


WIT & WISDOM WORKSHOP

Supporting Multilingual Learners

Wednesday, Feb. 5, 2025
4:15–6:15pm



Sign up on pd.jordandistrict.org



We will be diving into Wit & Wisdom's Multilingual Resources to identify supports and scaffolds for ML learners and other striving students. Teachers will have time to collaborate and plan. The Language and Culture Services team will be with us to help answer questions and provide support.