


BINGHAM COURT TOWNHOMES

11351 S. 1385 W., South Jordan



 **UTAH WORKFORCE HOUSING PRIORITY**

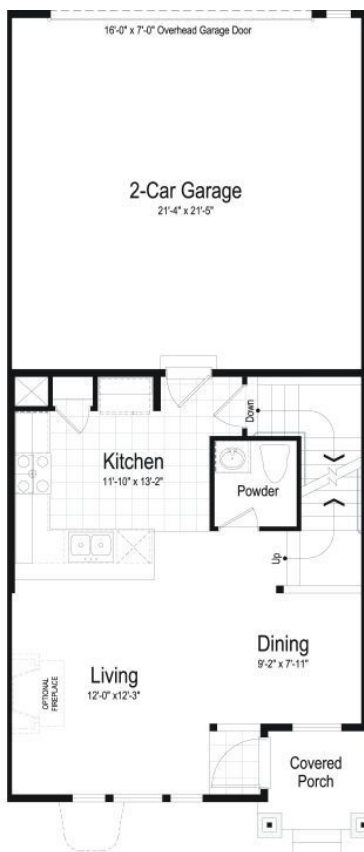


THE OLYMPIA

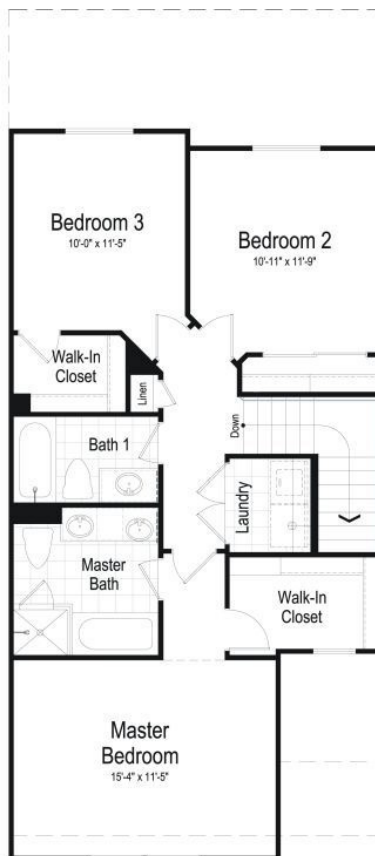
3 BEDS (UP TO 4) | 2.5 BATHS (UP TO 3.5) | 1,895 TOTAL SQ. FT.

Our Olympia townhome has all the things you need for your busy lifestyle - great space to entertain, space to relax and a place to store everything! The open main floor is a wonderful combination of the family room, dining and kitchen that make get-togethers with family and friends effortless. There's room to relax together, cook together and eat together! A spacious upper floor provides a lovely master suite with double sinks, a garden tub, separate shower and walk-in closet. The other two bedrooms have lots of closet space and the upstairs laundry and linen closet give you storage and convenience. All of this with a charming exterior design makes the Olympia the perfect home for you.

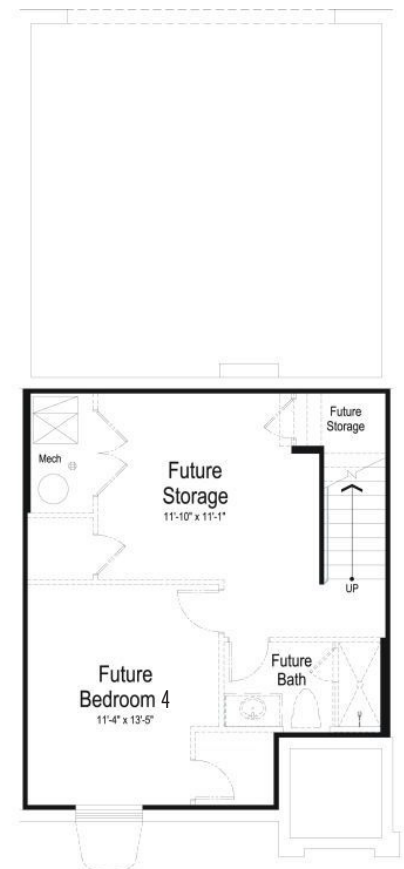
MAIN LEVEL



UPPER LEVEL



BASEMENT LEVEL

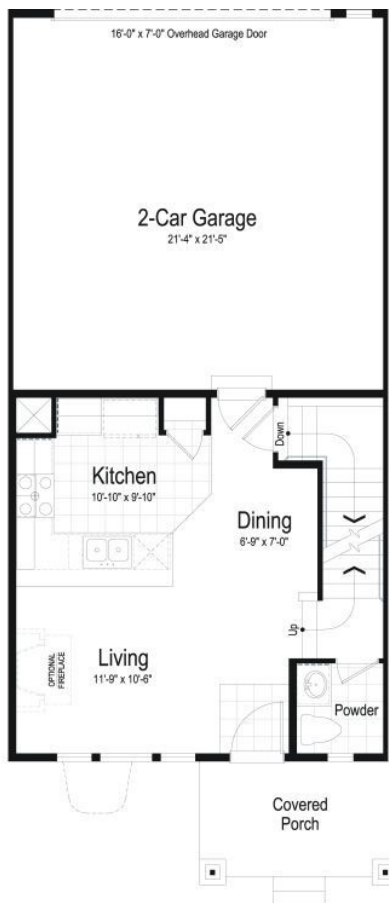


THE BELLEVUE II

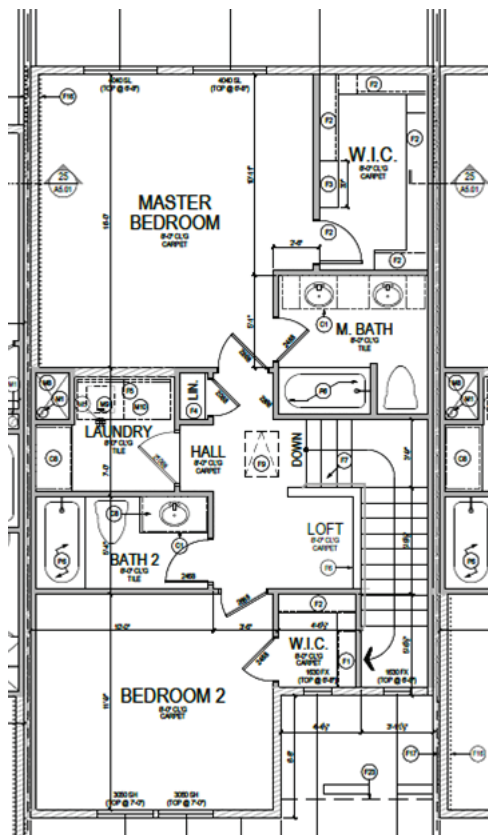
2 BEDS (UP TO 3) | 1.5 BATHS (UP TO 2.5) 1,558 TOTAL SQ. FT.

Ivory townhomes give you lots of space without the hassle of yard maintenance, and the Bellevue does it with style. A popular and affordable plan, the Bellevue gives you a nice transition from family room to dining nook to kitchen offering room to entertain, but at the same time keeping that cozy, intimate feeling. Main floor features include recessed lighting, a large breakfast bar and pantry closet. Upstairs you'll find a bigger master than you expected with a huge walk-in closet. Even the second bedroom has a walk-in closet, giving extra storage you'll appreciate besides the bonus linen closet. There is great convenience in having the laundry upstairs, right next to the bedrooms; no more dragging towering heaps of clothes up and down the stairs!

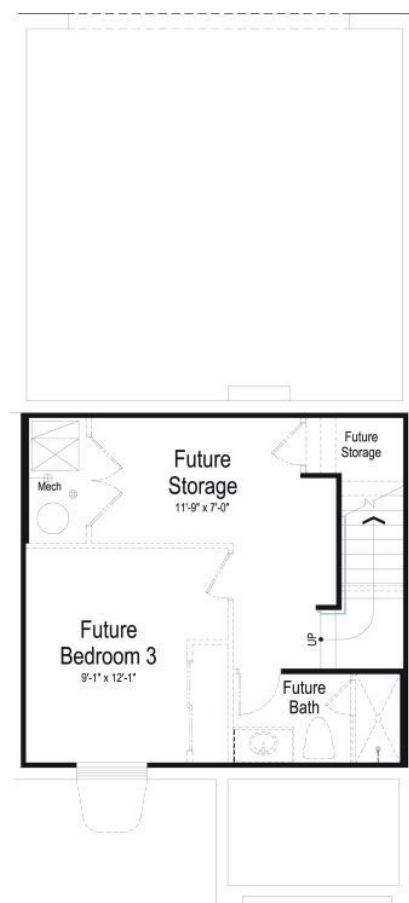
MAIN LEVEL



UPPER LEVEL



BASEMENT LEVEL



UTAH WORKFORCE HOUSING PRIORITY



Ivory Homes is committed to ensure that Utahns can afford to call our state home. As Utah's Number One Homebuilder®, we want to make a real impact on the lives of the people who help make our community great. Ivory Homes is setting aside lots, outside of any government requirement, to provide housing affordability opportunities to our most vital workforce.

BINGHAM COURT TOWNHOMES

In partnership with South Jordan City and the affordable housing initiative, we are excited to announce beautiful Townhomes in South Jordan! Bingham Court is located on 11400 S and 1300 W. This community is being released in segments but will eventually have a total of 24 cottage home lots ranging from 5,070 - 6,378 sq. ft. and 26 townhome lots ranging from 1,518 - 2,720 sq. ft.

ADDITIONAL BENEFITS:

- Window coverings included
- Sprinkler system as designed by Ivory Homes.
- Full yard sod as designed by Ivory Homes.
- HOA maintained landscaping
- Opportunity to add refrigerator, washer & dryer and include it in the mortgage with Momentum Loans

CONDITIONS:

- All participants' eligibility must be confirmed by Momentum Home Loans.
- Homes must be owner occupied and shall not be rented or sold for a period of two years after closing.
- No outside realtors or outside commissions paid.



MOMENTUMLOANS
BUILT FOR BORROWERS
NMLS #1606597 www.momentumloans.com

We can make a new home possible with our **LOW** Down **ZERO** Down Options.

Let us help **FIX** your **CREDIT**



IVORY GREEN HOMES
Utah's #1 Homebuilder

HOMEOWNERS CAN **SAVE \$1200**
A YEAR ON UTILITIES

*Compared to a typical used home
*3rd party verification



IVORY HOMES
Utah's Number One Homebuilder®

UTAH WORKFORCE HOUSING PRIORITY



Ivory Homes is setting aside lots, to provide our most affordable housing opportunities to our most vital workforce.

*Does not include any other promotion